



An International Comparative Look: Seeking Engaged Students

4th International Conference

“University Traditions: a Resource or a Burden?”

Russian Association of Higher Education Researchers

26–28 September 2013

John Aubrey Douglass

Senior Research Fellow – Public Policy and Higher Education

Center for Studies in Higher Education - UC Berkeley



Student Experience in the Research University Consortium

TEACHING – RESEARCH – PUBLIC SERVICE

Turning to the student side of the Equation

In assessing the quality and effectiveness of universities, much of the attention in the past focused on **the role of faculty** in an institution's main mission of teaching, research, and community service.

Now there is increased focus on the **student side of this equation**: in effect, what is their experience and contribution to this tripartite purpose of universities?





SERU Consortium Members 2013

SERU-AAU Consortium Members

University of California

- Berkeley
- Davis
- Irvine
- Los Angeles
- Merced
- Riverside
- San Diego
- Santa Barbara
- Santa Cruz

Rutgers University

University of Florida

University of Michigan

University of Minnesota

University of Oregon

University of Pittsburgh

University of Texas

University of Southern California

University of North Carolina

University of Virginia

Texas A&M University

University of Iowa

Indiana University

Purdue University

SERU-I Consortium Members

Universidade Estadual de Campinas

Hunan University

Nanjing University

Xi'an Jiaotong University

Amsterdam University College

University of Cape Town

University of Bristol

National Research University – HSE Moscow

University of Oxford

Osaka University





Student Experience in the Research University Consortium

- Major Cultural and Institutional Differences
 - Demographic Profiles
 - Learning Modes
 - Discipline Mix
 - Curriculum Structures/Approaches
 - Teaching Approaches
 - Resources – e.g. student to faculty ratios

- Yet Generally Very Similar Goals
 - Engaged versus passive learning
 - Research Opportunities
 - Community Service





Defining Engaged Student Scholarship

- Inquiry-Based Learning
- Experiential Learning
- Interdisciplinary Opportunities
- Integrative Knowledge
- Collaborative Learning and Problem Solving
- Diversity/Global Citizenry
- Ethics/Responsibilities
- Quantitative Literacy
- Communication Skills
- Digital Literacy



Student Experience in the Research University Consortium

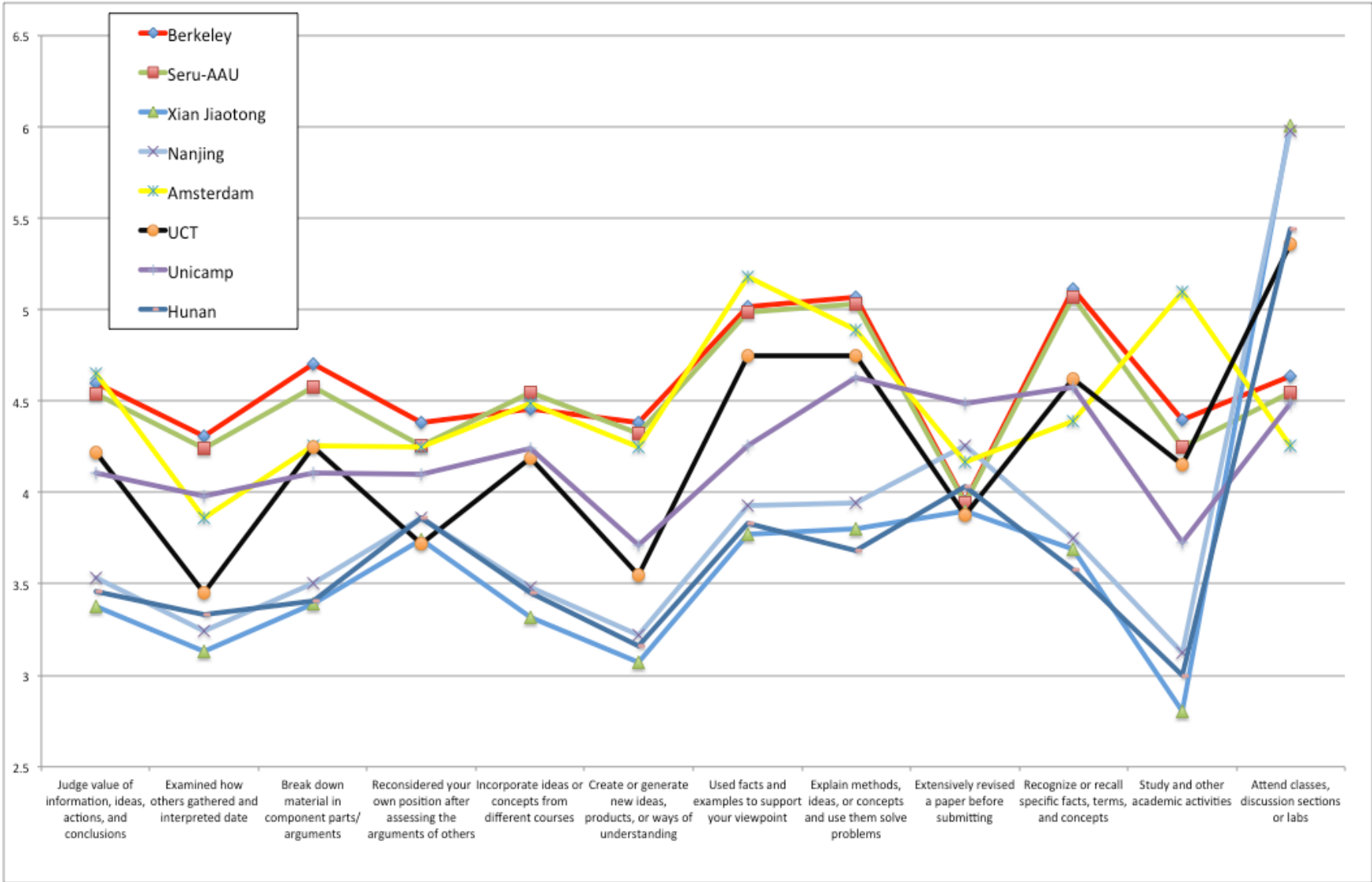
■ Core Questions

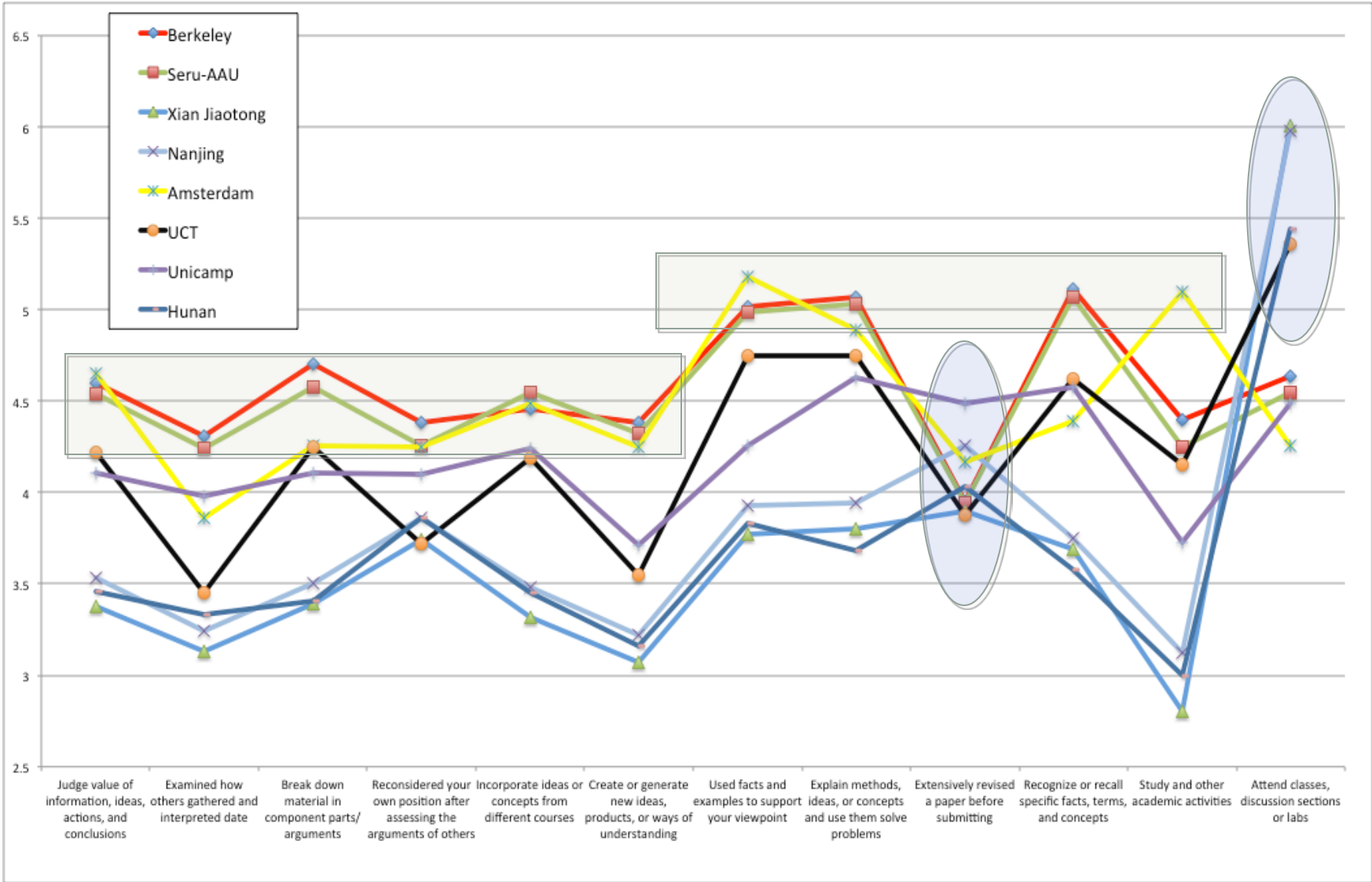
- Academic Engagement
- Student Life and Goals
- Background and Personal Characteristics

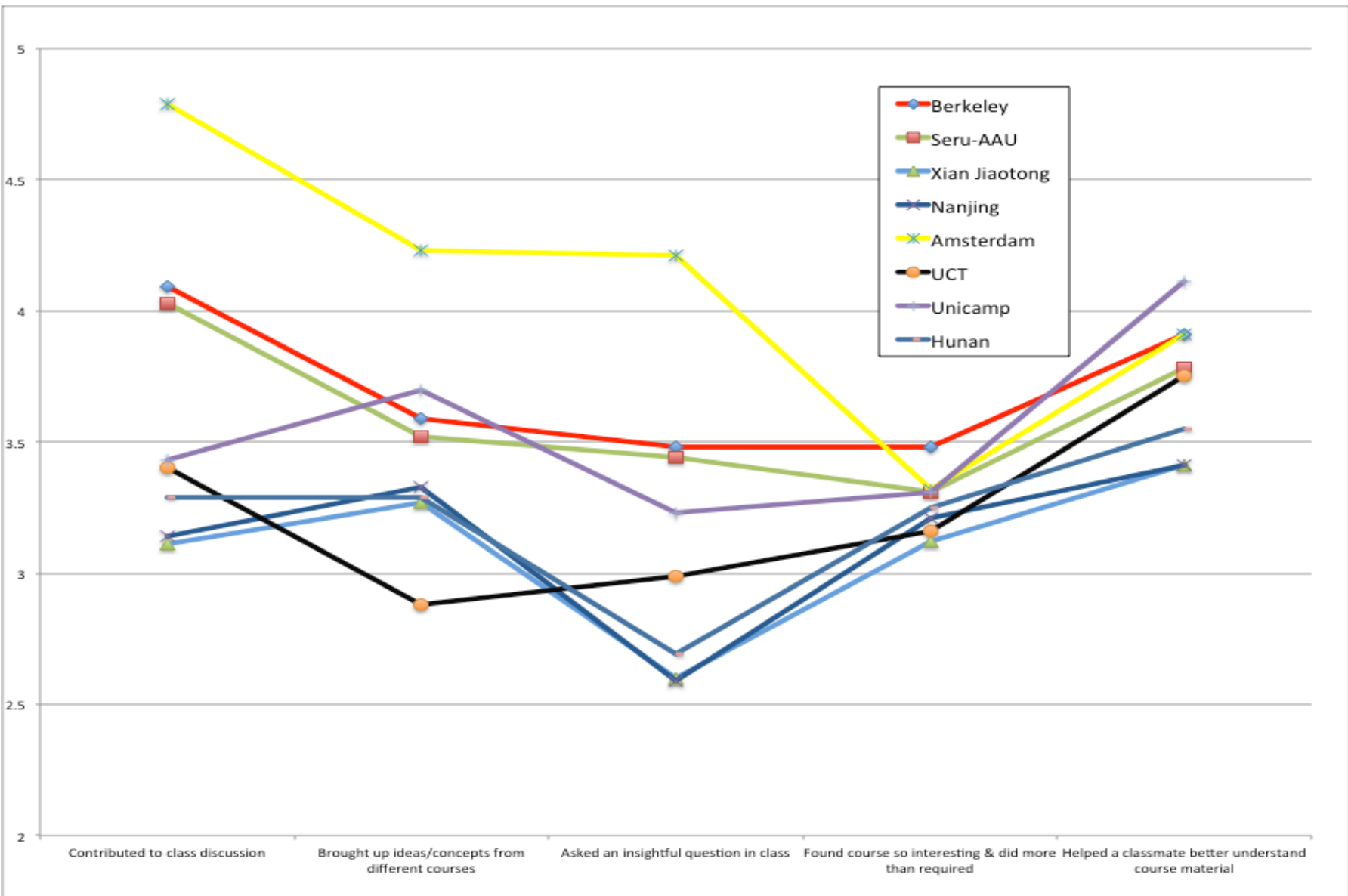
■ Topical Questions

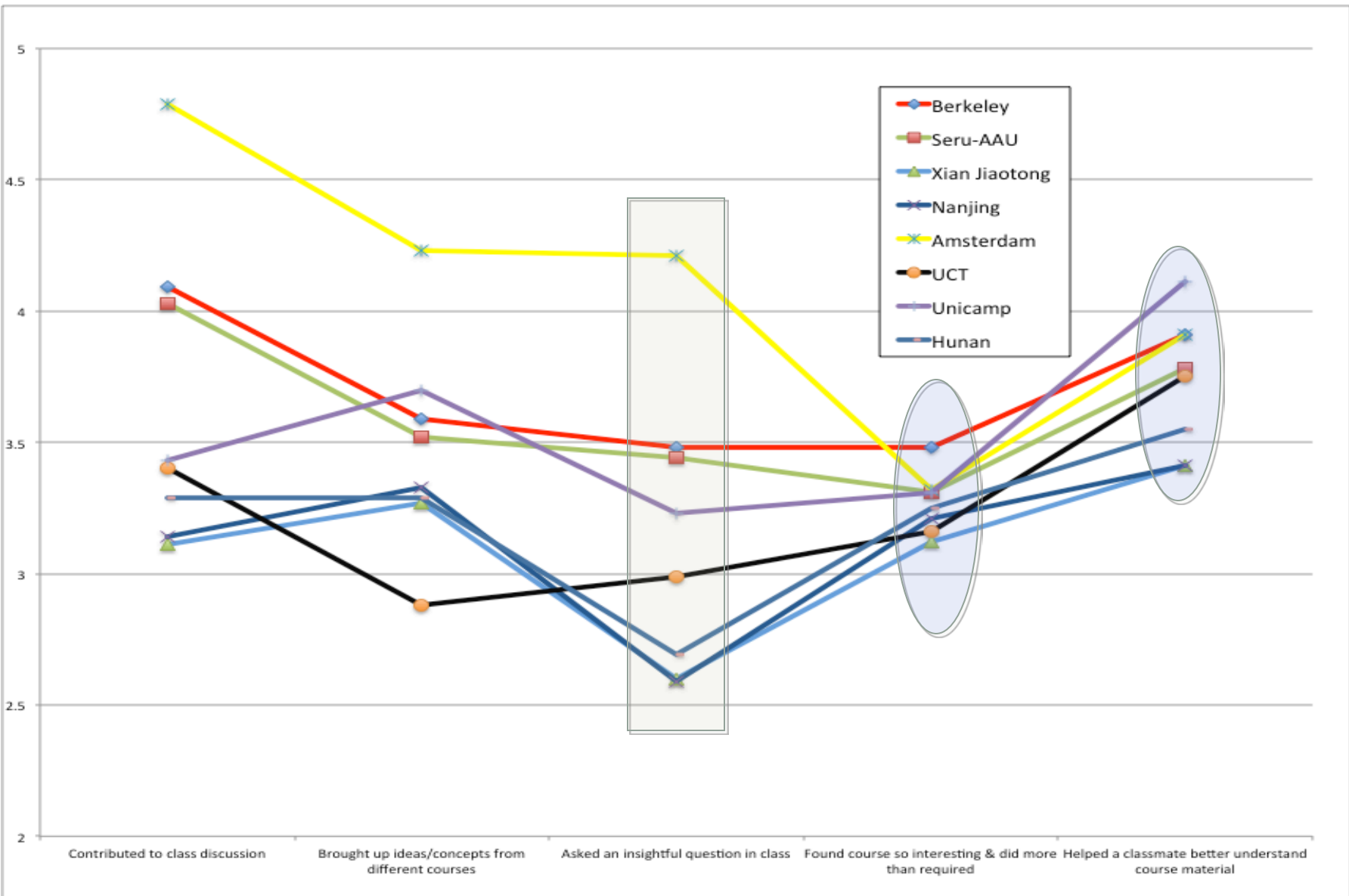
- Global Skills and Awareness
- Community and Civic Engagement
- Technology and Learning
- Open Ended Questions









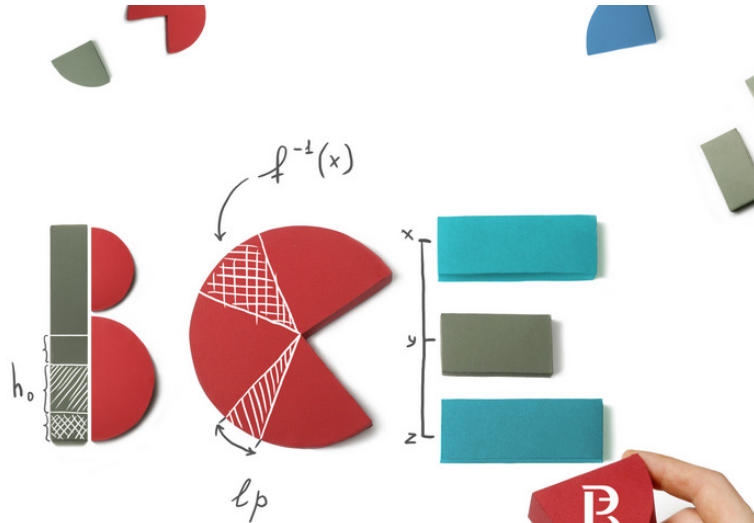




A Few Preliminary Conclusions

- That while our SERU campuses may be at a different spot on a scale of engagement, we generally share common goals in improving UG/first degree education/experiences.
- There are differences that reflect cultural norms and operational approaches to educating students – and that we need to explore the reasons for this.
- SERU-International – a tool for knowing thyself – who the students are, their academic and civic engagement, their input on how to get better has high value for our members, offering new insights and reinforcing curricular and teaching reform efforts.
- But we have more work to do!





ПОЗНАЕТСЯ В СРАВНЕНИИ

Вышка стремится улучшить образовательную среду для своих студентов. Насколько условия обучения в нашем университете отличаются от ведущих вузов мира? Студенты знают об этом лучше других.

В начале апреля в Вышке стартует опрос студентов, который проводится в рамках международного консорциума «Student Experience in the Research University». Точно такую же анкету заполняют студенты Калифорнийского университета в Беркли, Оксфордского университета и других ведущих вузов мира. После опроса мы сможем сравнить Вышку с ними.

Принять участие просто: каждому студенту придет ссылка для заполнения анкеты на его адрес почты @edu.hse.ru. Все участники опроса смогут принять участие в лотерее и выиграть фирменные сувениры с логотипом ВШЭ или супер-приз – планшетный компьютер!

Интересуют подробности? Заходите на сайт проекта seru.hse.ru или пишите сотрудникам Центра внутреннего мониторинга ВШЭ – cim@hse.ru

